

FOOD INSECURITY & FOOD ASSISTANCE NORTHEAST GEORGIA



of people living in the service area were food insecure in 2023¹

COMMON BARRIERS TO FOOD SECURITY²

INCREASING COST

While food costs increase, federal minimum wage has not increased since 2009

TRANSPORTATION

Lack of a personal vehicle, public transportation access, and longer distances to grocery stores

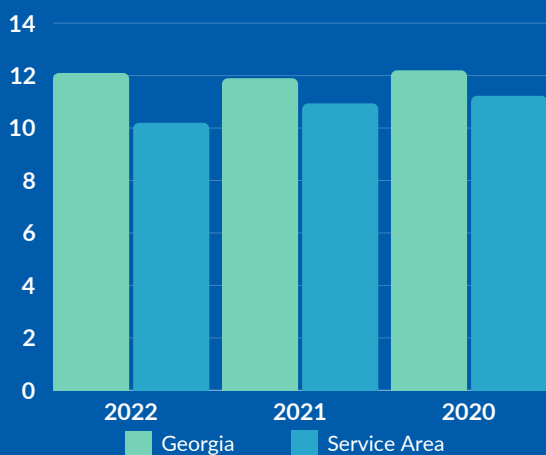
EDUCATION

Individuals may be unaware of eligibility status

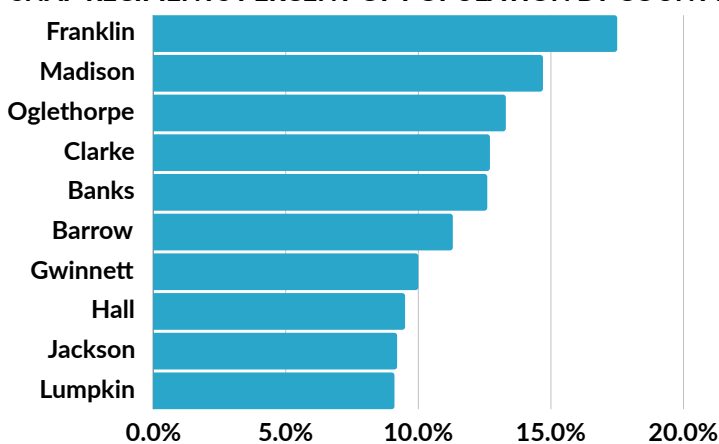
SUPPORT

Individuals may need assistance with application process

% OF HOUSEHOLDS ON SNAP BENEFIT¹



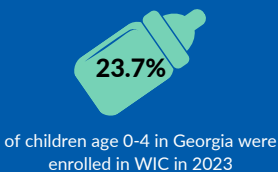
SNAP RECIPIENTS PERCENT OF POPULATION BY COUNTY³



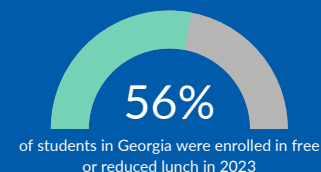
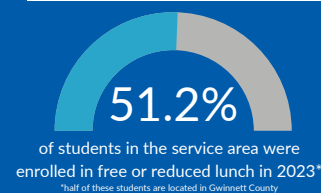
Despite having similar levels of food insecurity as the state, the service area percentages show lower enrollment than Georgia.

There is federal money allocated for SNAP and WIC that is not being distributed to households who qualify.

WIC UTILIZATION⁵



FREE OR REDUCED LUNCH⁶



KEY DEFINITIONS

Food Insecurity: A household-level economic and social condition of limited or uncertain access to adequate food⁷

SNAP: Supplemental Nutrition Assistance Program (SNAP) is a federally funded program that assists low-income households with food expenses. Anyone at or below 130% of the federal poverty level (FPL) can be eligible¹

WIC: Supplemental Program for Women, Infants, and Children is a federally funded program that provides supplemental food, healthcare referrals, and nutrition education to low-income women and their children under five⁵

[1] Map the Meal Gap

[2] Georgia Department of Human Services, Division of Aging Services

[3] USDA Food and Nutrition Service, Bi-Annual (January and July) State Project Area/County Level Participation and Issuance Data & U.S. Census Bureau, "Annual Estimates of the Resident Population"

[4] Census Quick Facts

[5] Kids Count Data Center

[6] National Center for Education Statistics

[7] U.S. Department of Health and Human Services, Office of Disease Prevention and Health Promotion: Health People 2030